



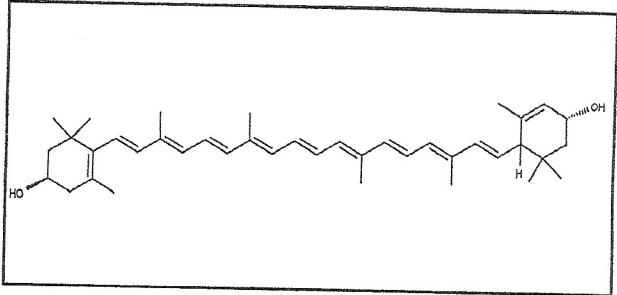
INDOFINE Chemical Company, Inc.

121 Stryker Lane, Bldg. 30
Hillsborough, NJ 08844 USA
Phone: (908) 359-6778; Fax: (908) 359-1179

Certificate Of Analysis

020306S **LUTEIN** **Lot No.: 23092073**

CAS RN	127-40-2
MOL FORMULA	C ₄₀ H ₅₆ O ₂
MOL WEIGHT	568,89



TEST	METHOD	UNIT	SPECIFICATION	RESULT
Appearance	Visual		Powder	Conform
Melting point		°C	174-181	178-180
Potency*	UV in methanol + 0,5% DCM	nm	421, 444, 472	Conform
	E1%		2520 +/- 100 at 444 nm	2580
			2320 +/- 100 at 472 nm	2370
Purity	HPLC	% area	≥ 92,0	95,1

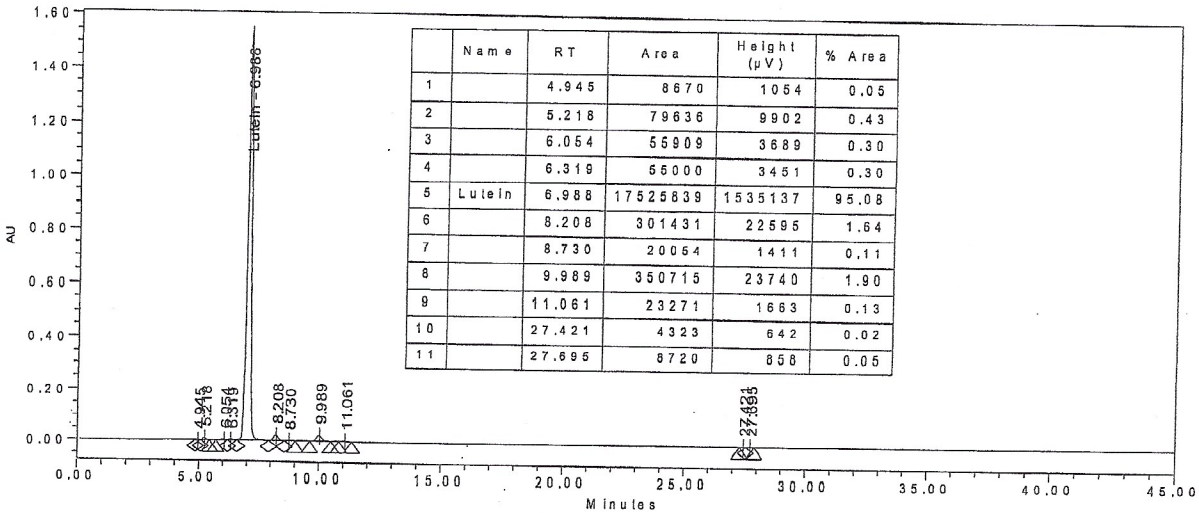
*Despite the specific and intensive care taken with these products, they are very fragile.

We recommend that you confirm product purity by measuring the E1%

CHROMATOGRAPHIC PURITY / HPLC

Column : YMC-Carotenoid 250 x 4,6 mm - 5 µm
 Mobile phase : 15/80/5 isocratic 3 min then 25/70/5 gradient in 17 min then 85/10/5 in 10 min
 A:TMBE B:MeOH C:ACN
 Temperature : 30°C
 Detection : UV 450 nm

Flow rate : 1 ml/min
 Injection volume : 5 µl
 Injection solvent : DCM / Methanol (5/15)



LONG TERM STORAGE : Below -15°C in a dry and dark place